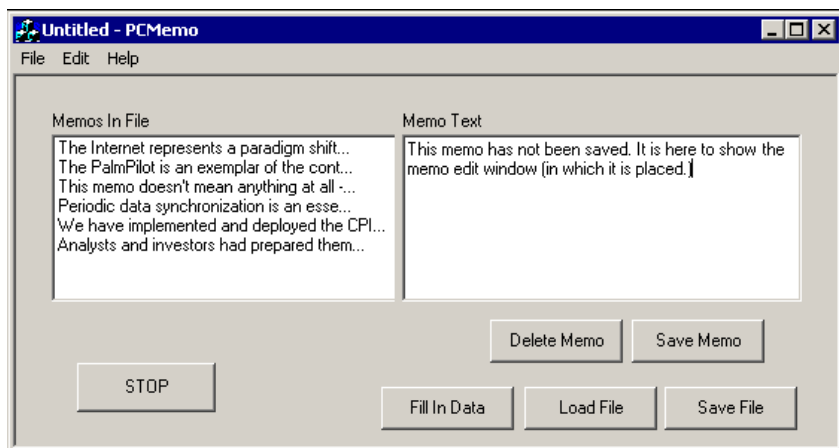


# Implementation

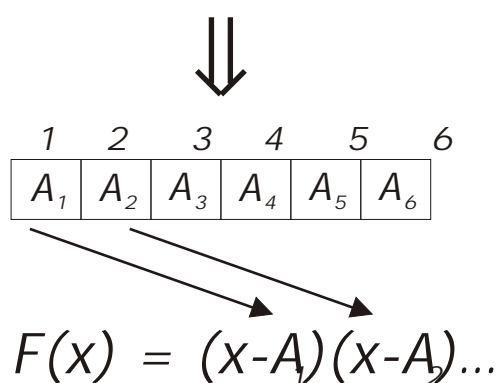
## A PC/PalmPilot System

PC

Palm

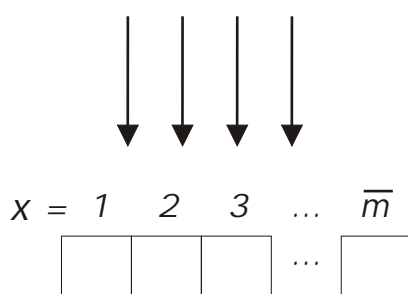


Memos are entered into special applications on the PalmPilot and the PC

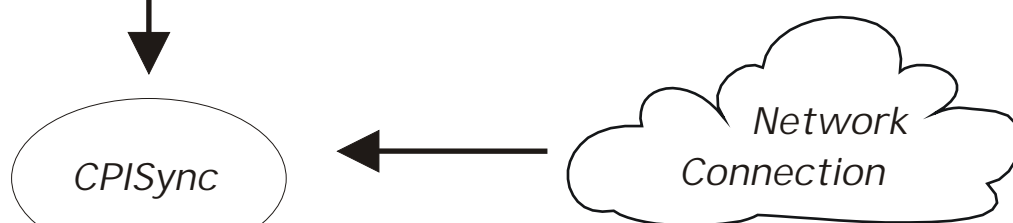
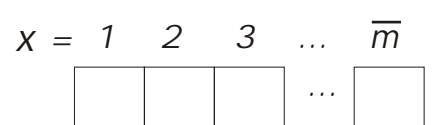
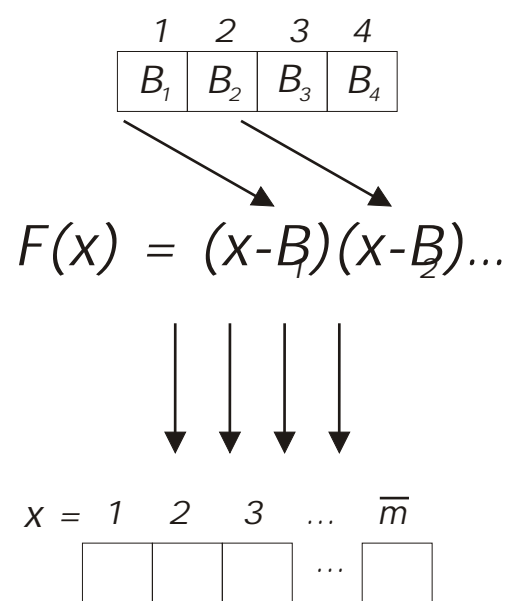


Each memo is converted to a unique hash

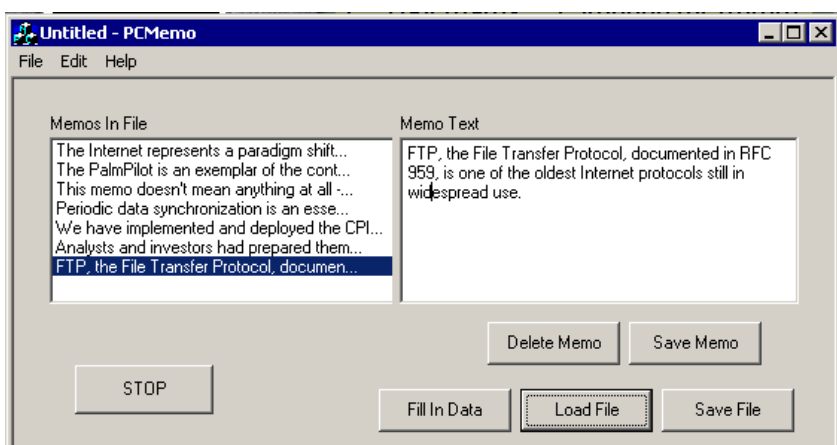
A characteristic polynomial is generated, based on the hash values



Sample points of the polynomial are generated and transferred over a network connection.



CPISync determines the missing hash values for each machine. The memo texts corresponding the hashes missing from the Palm are sent, along with the hashes that the PC is missing



Memo text corresponding to the PC's missing hashes is sent to the PC

